



## Hurricane Debby | Situation Report #5

**REPORT TIME & DATE:** 11:00 AM EDT | Thursday, August 08, 2024  
**REPORT DISTRIBUTION:** Congressional, State, and Energy Sector Industry Partners  
**REPORT POC:** [DL-EnergyResponseSA@hq.doe.gov](mailto:DL-EnergyResponseSA@hq.doe.gov)

*The following report has been released by the U.S. Department of Energy at TLP:AMBER to state and energy sector industry partners. Recipients may only share this information with members of their own organization with a need to know. This report may contain CONTROLLED UNCLASSIFIED INFORMATION (CUI), including Critical Infrastructure Information (CRIT), and is not intended for public disclosure or dissemination unless otherwise approved by the U.S. Department of Energy.*

### EXECUTIVE SUMMARY

Debby made landfall as a Category 1 Hurricane near Steinhatchee, FL in Florida's Big Bend region around 7:30 AM EDT on August 5. After a brief period in the Atlantic, Debby made its second landfall on the coast of South Carolina as a tropical storm this morning. As of 8:00 AM EDT, the storm is currently 65 miles west-northwest of Myrtle Beach, SC, moving northwest at 7 MPH with maximum sustained winds of 45 MPH. Tropical-storm-force winds extend outward up to 185 miles to the east of the center of Debby. On the forecast track, the storm is expected to accelerate toward the north-northwest and north across eastern South Carolina and central North Carolina through tonight. Debby is then expected to move faster across the U.S. Mid-Atlantic and northeast on Friday and Atlantic Canada on Saturday. Continued weakening is forecast over the next few days, and Debby is likely to become a tropical depression by the end of the day.

#### Electricity Sector Summary

- There are 130,000 customer outages in North Carolina and 9,000 customer outages in South Carolina as of 10:00 AM EDT on August 8. Greater than 95% of outages have been restored in Florida and Georgia as of 10 AM EDT on August 8.
- Utilities have been preparing for storm impacts, including pre-staging crew and equipment outside the projected storm track. As Debby passes, utilities will begin damage assessments and restoration efforts as conditions permit.

#### Oil & Natural Gas Sector Summary

- As of August 8, the ports of Florida, Georgia, and South Carolina were reopened. The port of Wilmington was closed on August 7.
- For the week ending on August 2, 2024, the Lower Atlantic Region (PADD 1C) gasoline inventory was 2% below the five-year average for this time of year, and distillate inventory was 4% below the five-year average for this time of year, according to EIA.

#### CONTROLLED UNCLASSIFIED INFORMATION

May be exempt from public release under the Freedom of Information Act (5 U.S.C. 552).

U.S. Department of Energy review required before public release.

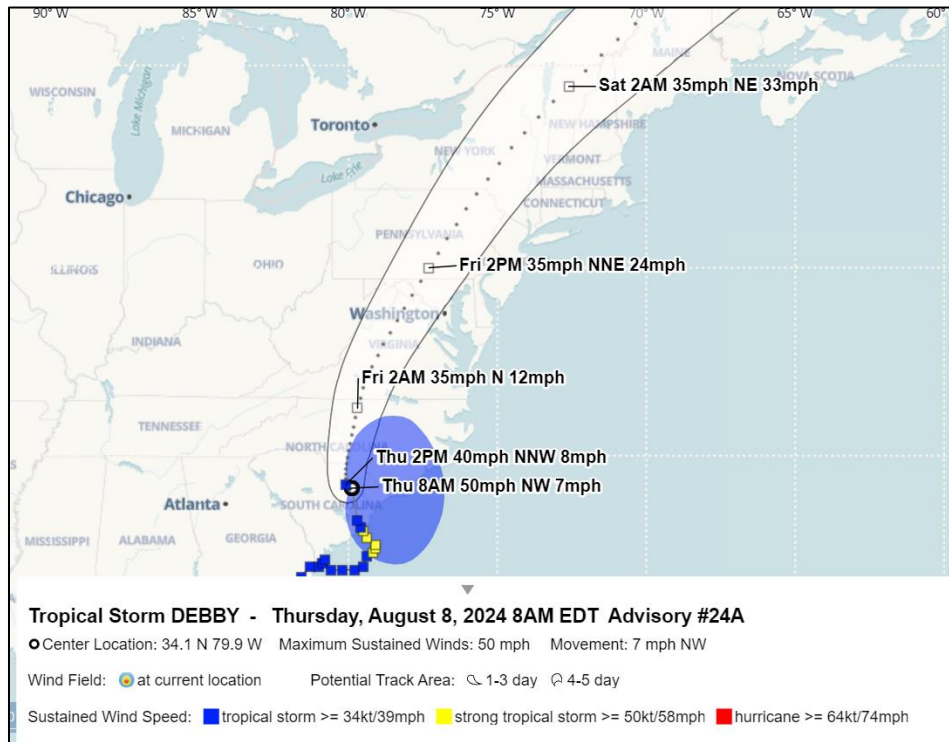
Organization: Matthew Tarduogno, DOE (CR-30) Date: August 8, 2024

### TROPICAL STORM DEBBY

Debby made landfall as a Category 1 Hurricane near Steinhatchee, FL in Florida’s Big Bend region around 7:30 AM EDT on August 5. After a brief period in the Atlantic, Debby made its second landfall on the coast of South Carolina as a tropical storm this morning. As of 8:00 AM EDT, the storm is currently 65 miles west-northwest of Myrtle Beach, SC, moving northwest at 7 MPH with maximum sustained winds of 45 MPH. Tropical-storm-force winds extend outward up to 185 miles to the east of the center of Debby. On the forecast track, the storm is expected to accelerate toward the north-northwest and north across eastern South Carolina and central North Carolina through tonight. Debby is then expected to move faster across the U.S. Mid-Atlantic and northeast on Friday and Atlantic Canada on Saturday. Continued weakening is forecast over the next few days, and Debby is likely to become a tropical depression by the end of the day.

Tropical Storm Warning is in effect for North of South Santee River, South Carolina to Ocracoke Inlet, North Carolina.

South Carolina is expecting an additional 1 to 3 inches over portions of eastern South Carolina. Debby is expected to produce an additional 3 to 6 inches of rainfall across North Carolina with select locations receiving higher amounts. From central North Carolina through Virginia, the storm is expected to produce an additional 3 to 7 inches of rain through Friday, and from Maryland north through Upstate New York and Vermont the storm is expected to produce 2 to 4 inches, with local amounts up to 6 inches expected through Friday night. This will likely produce considerable flash and urban flooding as well as river flooding.



Source: Hurrevac

## DOE ACTIONS

### DOE CR Energy Response Center (Energy Sector)

- Activation Level: Activated (Level 2)

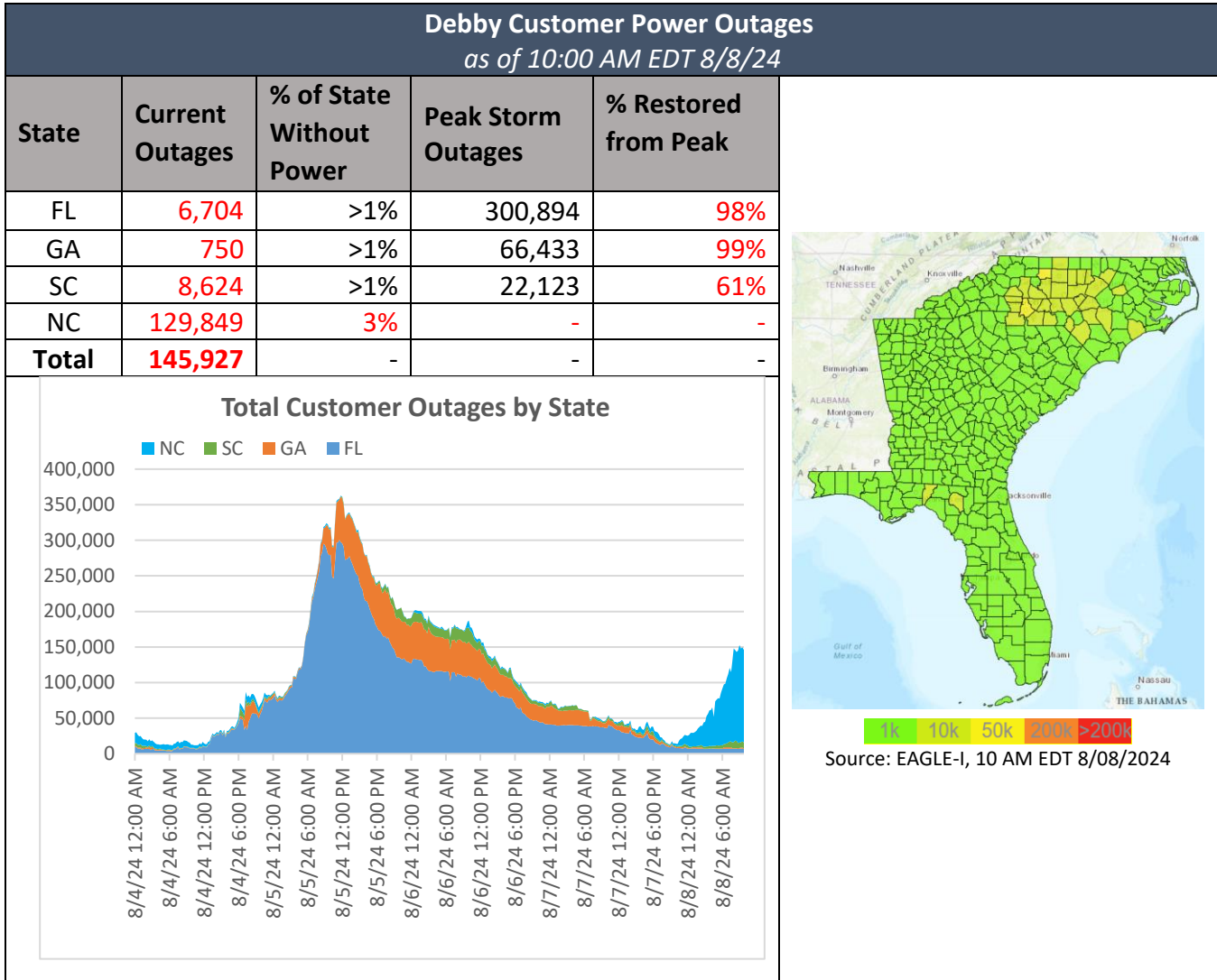
### ESF #12/SRMA Deployments

- **Hurricane Debby**
  - FEMA National Response Coordination Center – Washington, DC
  - FEMA Regional Response Coordination Center – Atlanta, GA

**ELECTRICITY SECTOR**

**POWER OUTAGES**

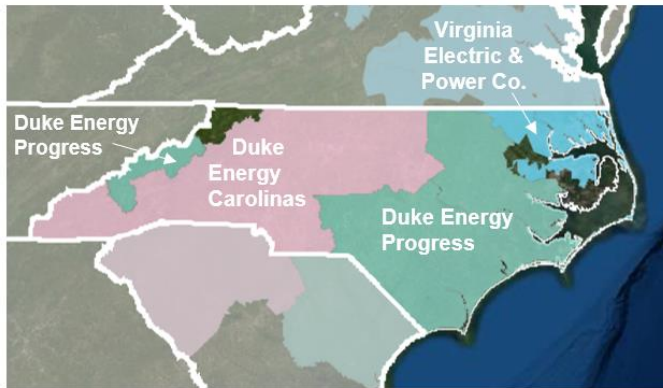
- There are 130,000 customer outages in North Carolina and 9,000 customer outages in South Carolina as of 10:00 AM EDT on August 8. Greater than 95% of outages have been restored in Florida and Georgia as of 10 AM EDT on August 8.
- As of August 5, NERC reports that the bulk power system remains stable across Florida and Georgia as Debby passes through the region.
- Over 22,000 restoration personnel from at least 13 states are assisting with restoration.
- Utilities have begun damage assessments and restoration efforts as conditions permit. Restoration efforts and damage assessments will be limited until the storm has passed and weather conditions clear. Crews are unable to operate in heavily flooded areas and when wind speeds are greater than 30 MPH.
- In advance of the storm, utilities pre-staged crew, materials, and equipment outside the projected storm track.



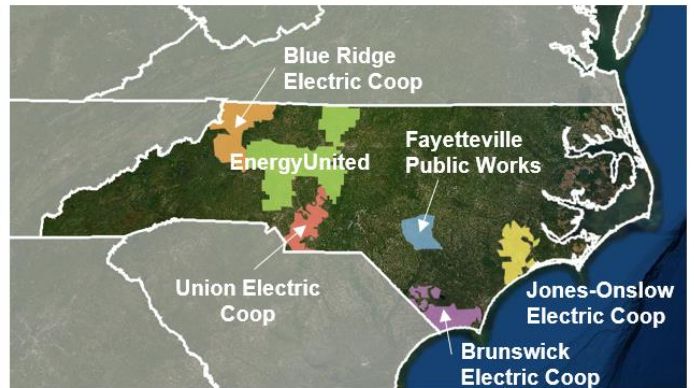
STATE DETAILS

NORTH CAROLINA

Largest Investor-Owned Utilities



Largest Cooperative and Municipal Utilities



Source: HSIN-CI with DOE Notations

Note: Only utilities with over 75,000 customers are shown in the map.

Source: Homeland Security Information Network – Critical Infrastructure (HSIN-CI) Map, DOE notations

**Investor-Owned Utilities**

**DUKE ENERGY NORTH CAROLINA – 101,000 customers out**

- On August 7, Duke Energy stated it is strategically staging crews across the Carolinas to be ready to respond as soon as conditions are safe to do so.
- On August 7, Duke Energy stated it has 7,500 lineworkers, vegetation management and other workers, including 300 traveling from the Midwest in advance of the storm, to help support storm restoration efforts.

**Cooperative and Municipal Utilities**

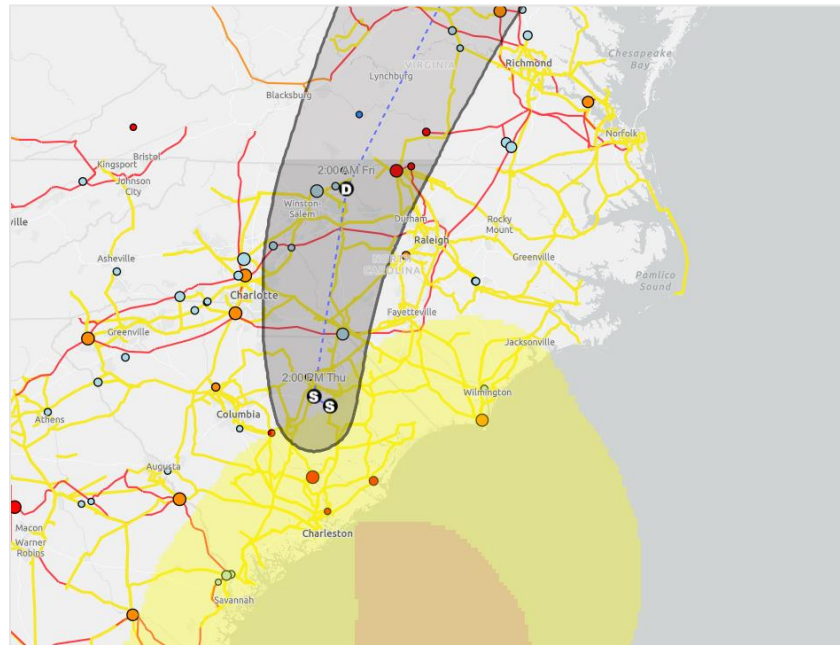
**ENERGYUNITED ELECTRIC MEMBER CORP – 8,000 customers out**

- As of August 8, EnergyUnited stated that crews are responding to power outages caused by Tropical Storm Debby.

**LUMBEE RIVER ELECTRIC MEMBER CORP (LREMC) – 6,600 customers out**

- On August 8 at 8 AM EDT, LREMC stated that most of its outages are due to the storm taking the North Lumberton and Raft Swamp substations offline. LREMC crews are on the ground assessing damage and working to restore power.

### Map of Debby Projected Storm Track on Electricity Infrastructure

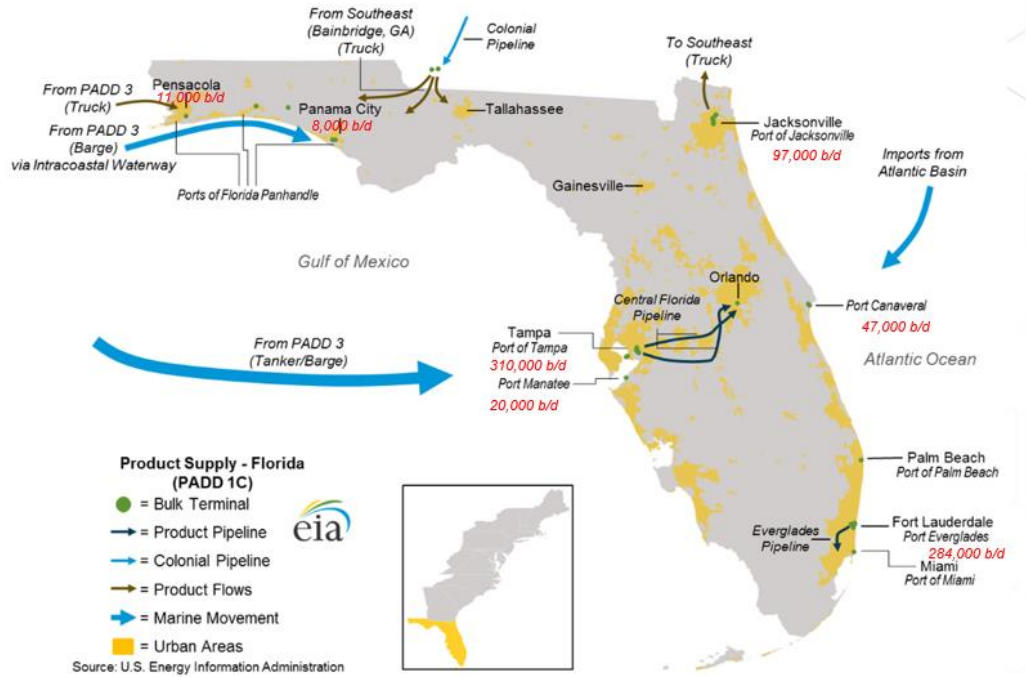


Source: ArcGIS

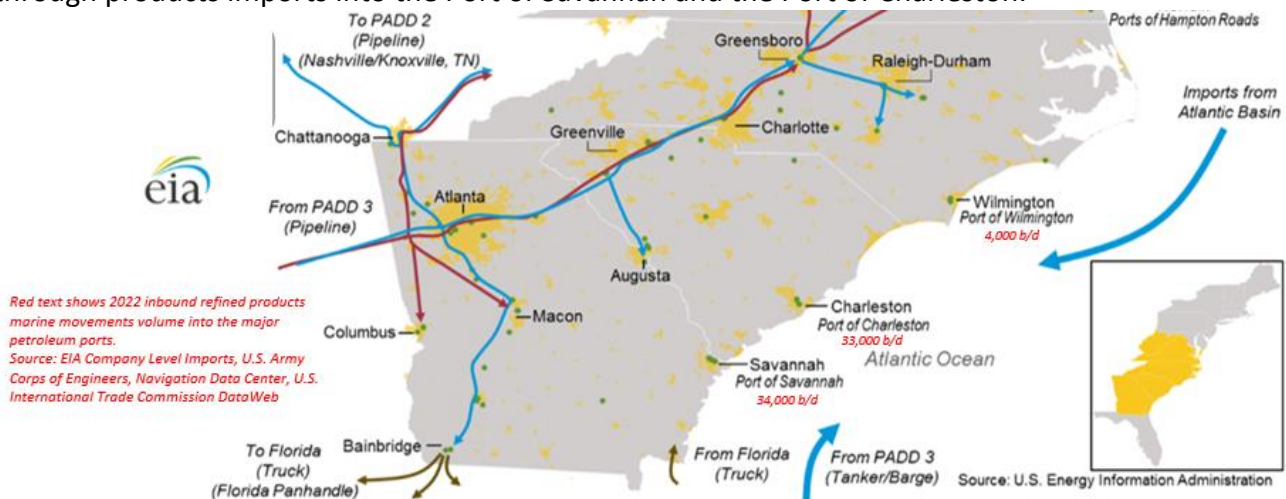


### OIL AND NATURAL GAS SECTOR

Florida receives essentially all its transportation fuels via marine delivery from domestic and foreign producers and has no connectivity with interstate pipelines and no refineries in the state. A limited amount of product is trucked into northern Florida from neighboring states. The ports of Tampa, Everglades, Jacksonville, and Canaveral are the major ports receiving transportation fuels. Petroleum products imported into the state are then moved throughout Florida via intrastate pipelines from primarily the Tampa Bay port area across central Florida to Orlando, and by truck from other ports.



South Carolina and Georgia also have no in-state refining capacity available and rely on refined products supplied by the Colonial Pipeline and Kinder Morgan’s PPL Pipeline to deliver products from the Gulf Coast refining region to markets in-state. A source of alternative supply to both states is through products imports into the Port of Savannah and the Port of Charleston.



**PORTS**

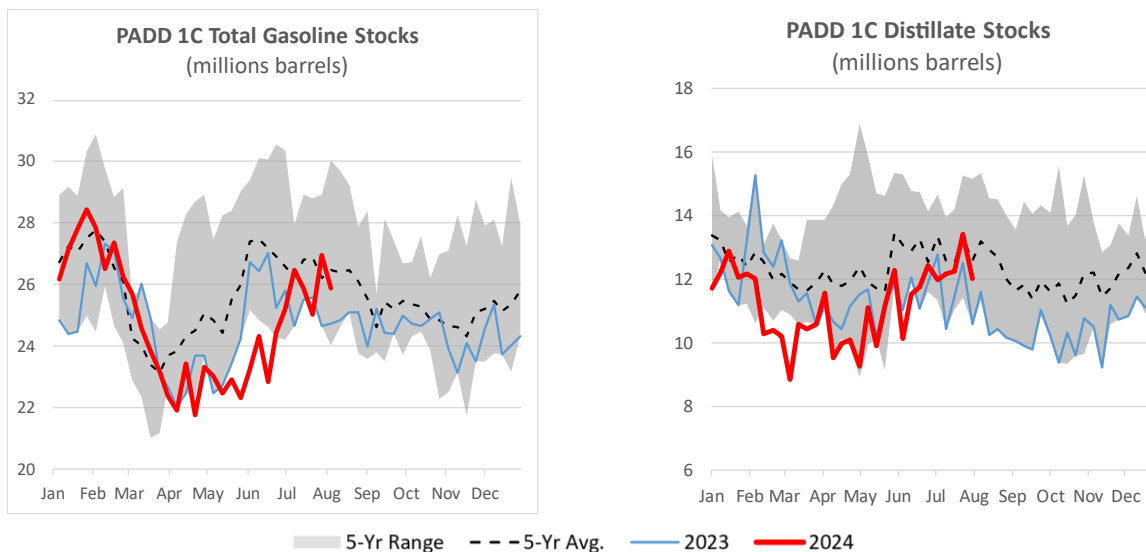
- The U.S. Coast Guard has set the following conditions for Gulf Coast and Southeast ports as a result of Hurricane Debby.

Status of Southeast Ports as of 10:00 AM EDT 08/08/2024				
Port Sector	Port	Inbound Products (b/d)	Status	Date Stamp
Jacksonville	Jacksonville, FL	97,000	Open.	8/6
	Port Canaveral, FL	47,000	Open	8/3
Miami	Miami, FL	1,000	Open	8/3
	Port Everglades, FL	283,000	Open	8/3
St. Petersburg	Tampa, FL	310,000	Open	8/5
	Port Manatee, FL	20,000	Open with Restrictions. Berth #6 remains closed.	8/6
Mobile	Mobile, AL	6,000	Open	8/5
	Panama City, FL	8,000	Open	8/5
	Pensacola, FL	11,000	Open	8/5
	Gulf Intracoastal Waterway	N/A	Open.	8/6
Savannah	Savannah, GA	34,000	Open.	8/7
Charleston	Charleston, SC	33,000	Open.	8/8
Wilmington	Wilmington, NC	4,000	Closed. Port Condition Modified ZULU	8/7

Source: U.S. Coast Guard [Homeport](#), U.S. Army Corp of Engineers 2021, EIA Company Level Imports 2021

**FUEL STOCKS**

- For the week ending on August 2, 2024, the Lower Atlantic Region (PADD 1C) had 25.88 million barrels of total gasoline stocks, according to the Energy Information Administration (EIA). This is 2% below the five-year average for this time of year. For the week ending on August 2, 2024, the Lower Atlantic Region had 12.0 million barrels of total distillate stocks, according to EIA. This is 4% below the five-year average for this time of year.



Source: EIA Weekly Petroleum Status Report





**EMERGENCY DECLARATIONS & WAIVERS**

**EMERGENCY DECLARATIONS**

To provide vital supplies and transportation services to a disaster area in the United States, emergency declarations may be issued by the President, Governors of States, or Federal Motor Carrier Safety Administration (FMCSA). These declarations trigger the temporary suspension of certain Federal safety regulations, including Hours of Service, for motor carriers and drivers engaged in specific aspects of the emergency relief effort. See 49 CFR 390.23 for the actual emergency regulation.

Emergency Declarations and HOS Waivers as of 10:00 AM EDT 08/08/2024				
State/Territory	Details	Effective Dates		Status
		Start	End	
Florida	<a href="#">Presidential Emergency Declaration:</a> Emergency Declaration ordering Federal assistance to supplement state, tribal, and local efforts. FEMA will coordinate disaster relief.	Aug 1	Until Rescinded	Active
Florida	<a href="#">State of Emergency:</a> Executive Orders 24-156 and 24-157; 61 Counties	Aug 1	Oct 1	Active
Florida	<a href="#">Emergency Road Use Permit Letter:</a> Suspends size and weight restrictions for divisible loads on any vehicles transporting emergency equipment, services, supplies or personnel.	Aug 2	Aug 9	Active
Florida	<a href="#">Authorization for Emergency Response Vehicles:</a> Emergency response vehicles are given authorization to bypass all FDOT weigh station facilities.	Aug 3	Aug 16	Active
Georgia	<a href="#">State of Emergency:</a> Executive Order; All 159 Counties Regulations limiting hours operators of commercial vehicles may drive are suspended.	Aug 3	Aug 15 (extended)	Active
Georgia	<a href="#">Presidential Emergency Declaration</a>	Aug 4	Until Rescinded	Active
South Carolina	<a href="#">State of Emergency:</a> Executive Order 2024-16	Aug 4	Aug 19	Active
South Carolina	<a href="#">Presidential Emergency Declaration</a>	Aug 4	Until Rescinded	Active
North Carolina	<a href="#">State of Emergency</a>	Aug 5	Sept. 4	Active
North Carolina	<a href="#">Presidential Emergency Declaration</a>	Aug 7	Until Rescinded	Active
Kentucky	<a href="#">Declaration of Emergency</a> - Order No. 113735	Aug 2	Aug 16	Active
Virginia	<a href="#">State of Emergency</a> - Executive Order 34	Aug 6	Sept. 6	Active
Virginia	<b>Emergency Transportation Wavier*</b> Virginia Department of Transportation Suspends size and weight restrictions on roads controlled by VDOT	Aug 7	Aug 14	Active

Sources: State government websites, White House Briefing Room, \*Virginia Energy Office